



*The alarm is worn on the upper arm of the outermost overalls of the working personnel, and the front of the alarm is facing the outside.*

### Product Function

After the operator wears the alarm, and close to the high voltage charged body for a certain distance, the alarm will send out a sound and light alarm according to the safety distance of the corresponding voltage level to remind the electrical worker to pay attention to safety and avoid high voltage electric shock accident. This product can also be used for line fault detection and electroscope.

### Product Feature

1. Provide a safe, practical and convenient new style high voltage alarm device for high voltage approach electric operator. It is especially suitable for the site of overhead high voltage line.
2. Adopt non-contact induction technology, alarm accurately, power saving and durable, standby time up to 12 months.
3. All-directional induction voltage power source, automatic trigger detection mode, with sound and light alarm mode, to ensure the safety of approach electricity workers.

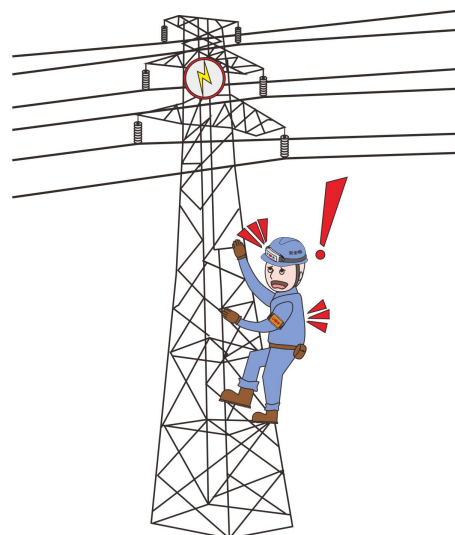
### Technical Specification

1. **Voltage Level and Alarm Distance** (The safety distance is in accordance with "GB 26860-2011 Electric Power Safety Working Regulations-Electrical Part of Power Plants and Substations" and "GB 26859-2011 Electric Safety Working Regulations-Power Line Part")
2. Higher voltage levels not described in the corresponding models in the table can generate alarms at a certain distance, but the actual alarm distance error will be larger.

Model	Voltage Level	Safe Distance	Alarm Distance	Model	Voltage Level	Alarm Distance
EM1870	0.4kV		0.02m	EM1870C	40V	5cm
	1KV		0.10m		110V	10cm
	6.6KV		0.70m		220V	15cm
	10KV	0.70m	1.00m		600V	40cm
	35KV	1.00m	1.60m		1KV	60cm
	66KV	1.50m	2.20m			
	110KV	1.50m	2.50m			
	220KV	3.00m	3.50m			
	330KV	4.00m	4.50m			
	500KV	5.00m	5.50m			

### 2. Technical Parameters

Power Supply	CR1632 (140mAH) button cell 2PCS
Alarm Voltage Range	EM1870: 0.4kV~500kV (high voltage alarm) EM1870C: 40V~1kV (Low voltage alarm)
Working Frequency	50Hz/60Hz
Electricity Testing Mode	Non-contact mode
Detection Mode	Automatic trigger
Alarm Distance Error	±10cm (under base condition)
Battery Life	Continues working (sound and light alarm): about 24 hours
	Standby: about 12 months
Alarm Mode	Indicator: LED light visibility under 8000LX visible light
	Buzzer: above 60dB (60CM apart)
Protection Level	IP54
Weight	Meter: 46g (include battery); Total: 0.08kg (include accessories)
Dimensions	88mmX32mmX30mm



Working Temperature	-10°C~40°C; below 80%RH
Accessories	Alarm: 1PCS; Button battery: 2PCS; Plastic Coin (use for replace battery): 1PCS